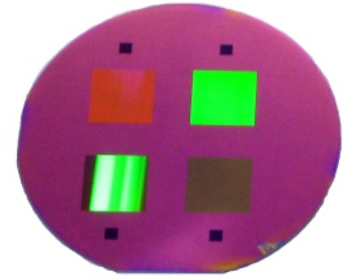


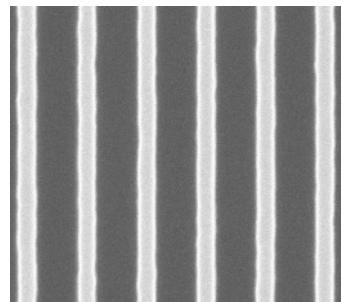
# MULTI-RESOLUTION LINEAR GRATING COMBINATIONS

Eulitha's linear grating combinations give researchers the opportunity to work with gratings with different periods on the same substrate. They are made with Eulitha's revolutionary PHABLE™ technology, which guarantees highest quality at an affordable price. Optimized silicon and quartz etching yields line patterns with a slight positive slope that facilitates the imprint process. The multi-resolution standard molds are intended for research and development work. Please contact us for larger areas, special designs or high volume applications.

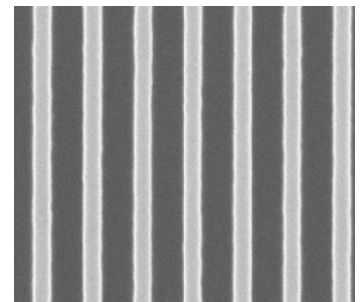


picture of MP300L600 on a 2" Si substrate

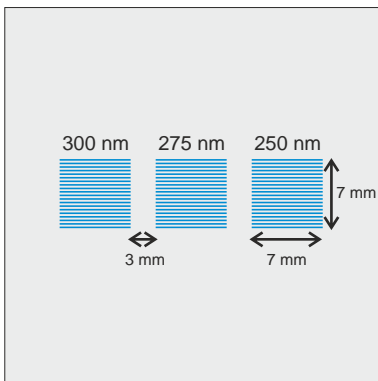
- NIL process development
- Nanophotonics
- Transmission and reflection gratings
- Spectroscopy gratings
- Epitaxial growth templates
- Self-assembly templates



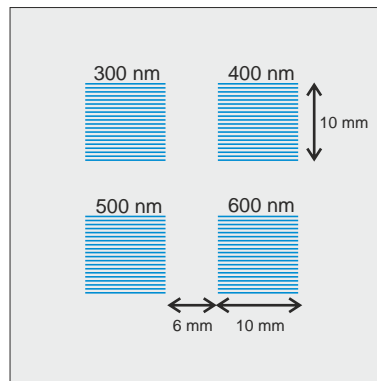
250 nm period grating



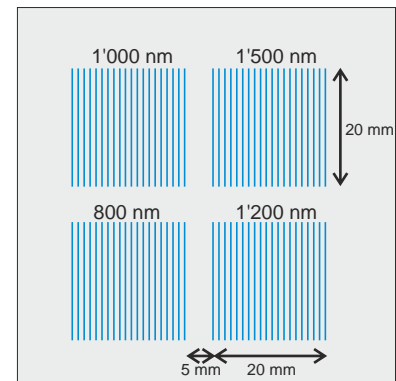
300 nm period grating



Layout of MP250L300 drawing not to scale



Layout of MP300L600 drawing not to scale



Layout of MP800L1500 drawing not to scale

Product*	Grating Periods	Pattern Area	Line Height** (Si/Quartz)
MP250L300	250nm, 275nm, 300nm	7x7mm <sup>2</sup> (each grating)	<200nm / <100nm
MP300L600	300nm, 400nm, 500nm, 600nm	10x10mm <sup>2</sup> (each grating)	<300nm / <150nm
MP800L1500	0.8µm, 1.0µm, 1.2µm, 1.5µm	20x20mm <sup>2</sup> (each grating)	<1'000nm / <500nm
MP500L2050	500nm, 550nm ... 2050nm	20x20mm <sup>2</sup> (each grating)	<1'000nm / <500nm

\* Substrate: up to 4-inch diameter Si or fused silica  
Anti-stick coating optional

\*\* Line height: customer selectable up to values specified in table

